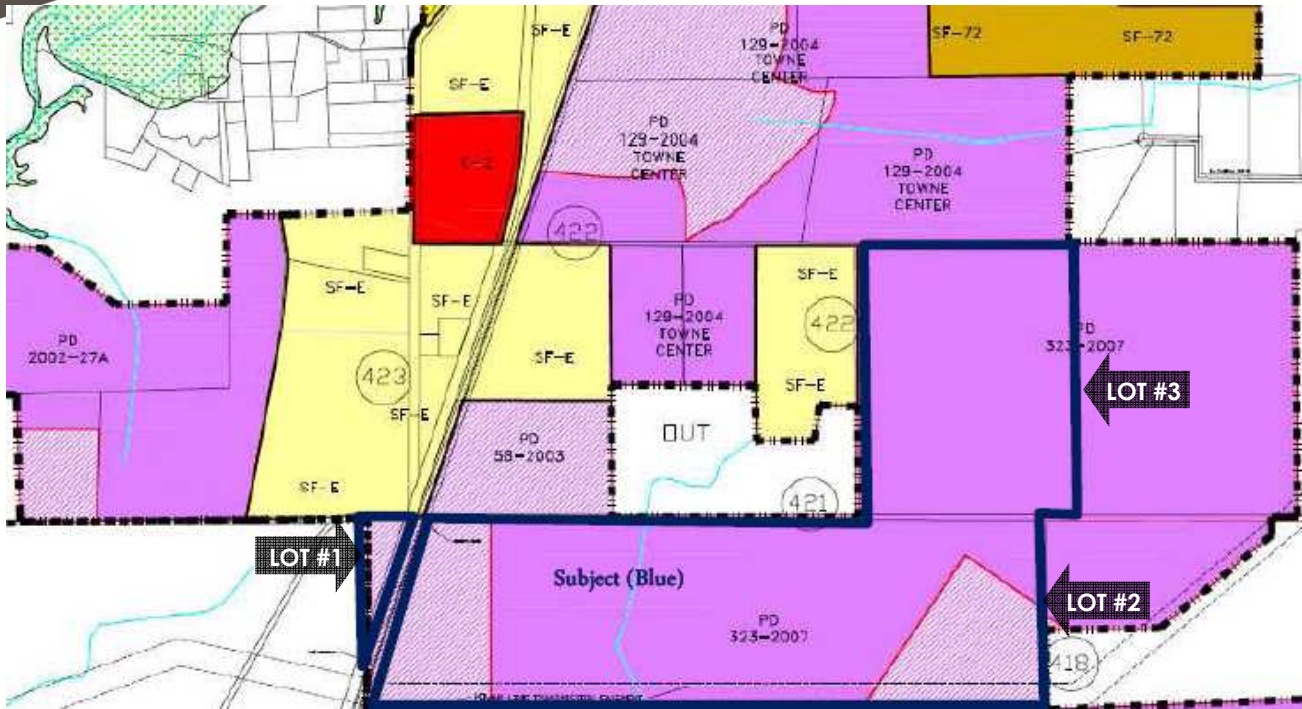


PROPERTY ZONING



- | | | | |
|-------|--|------|---|
| AG | AGRICULTURAL DISTRICT | MF-2 | MULTIPLE FAMILY RESIDENTIAL - HIGH DENSITY |
| SF-E | SINGLE FAMILY RESIDENTIAL - LARGE LOT | C-1 | RESTRICTED COMMERCIAL |
| SF-1 | SINGLE FAMILY RESIDENTIAL | NC | NEIGHBORHOOD COMMERCIAL |
| SF-84 | SINGLE FAMILY RESIDENTIAL | C-2 | GENERAL COMMERCIAL |
| SF-72 | SINGLE FAMILY RESIDENTIAL | CBRD | CENTRAL BUSINESS REDEVELOPMENT DISTRICT |
| SF-60 | SINGLE FAMILY RESIDENTIAL | C-3 | PLANNED CENTER DISTRICT REGULATIONS |
| SF-Z | SINGLE FAMILY ZERO LOT LINE | O-1 | OFFICE DISTRICT |
| SF-TH | SINGLE FAMILY TOWN HOME | I-1 | LIGHT INDUSTRIAL |
| MH-1 | MANUFACTURED HOME DISTRICT | I-2 | HEAVY INDUSTRIAL |
| MH-2 | MANUFACTURED HOME PARK DISTRICT | PD | PLANNED DEVELOPMENT DISTRICT FOR RESIDENTIAL USES |
| TF | DUPLEX (TWO FAMILY RESIDENTIAL) | PD | PLANNED DEVELOPMENT DISTRICT FOR COMMERCIAL USES |
| MF-1 | MULTIPLE FAMILY RESIDENTIAL - MEDIUM DENSITY | FP | FLOODPLAIN DISTRICT |

DEMOGRAPHICS*

RADIUS	1 MI.	3 MI.	5 MI.
2010 POPULATION TOTAL	520	10,775	16,903
2010 MEDIAN HOUSEHOLD INCOME	\$59,605	\$60,024	\$60,763
2010 AVERAGE HOUSEHOLD INCOME	\$80,269	\$80,169	\$81,167
2010 TOTAL HOUSEHOLDS	160	3,746	5,882
OWNER OCCUPIED HOUSING UNITS	82.4%	81.8%	80.2%
TOTAL BUSINESSES	4	227	360
TOTAL EMPLOYEES	24	1,497	2,392

(See agent for full demographics report)

*2010 Demographics provided by STDBOnline



HENRY S. MILLER BROKERAGE, LLC
Since 1914

AUSTIN DALLAS FORT WORTH HOUSTON SAN ANTONIO

Providence Towers West | 5001 Spring Valley Rd. #1100 | 972.419.4000 | www.henrysmiller.com



The information contained herein was obtained from sources believed reliable; however Henry S. Miller Brokerage, LLC make no guarantees, warranties or representations as to the completeness or accuracy thereof. The information submitted is subject to errors, omissions, changes of price or conditions, prior sale or lease, or withdrawal without notice. Any projections, assumptions or estimates are for illustrative purposes only. Recipients should conduct their own investigations.